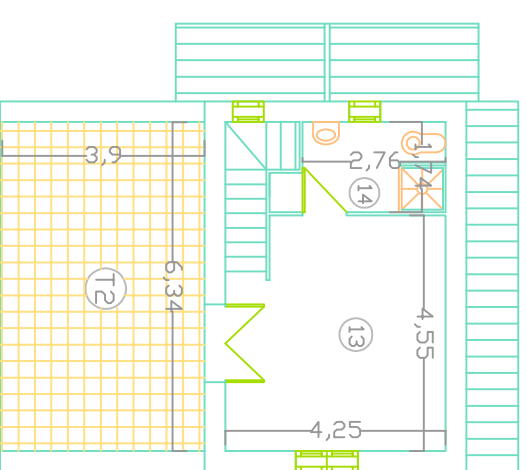
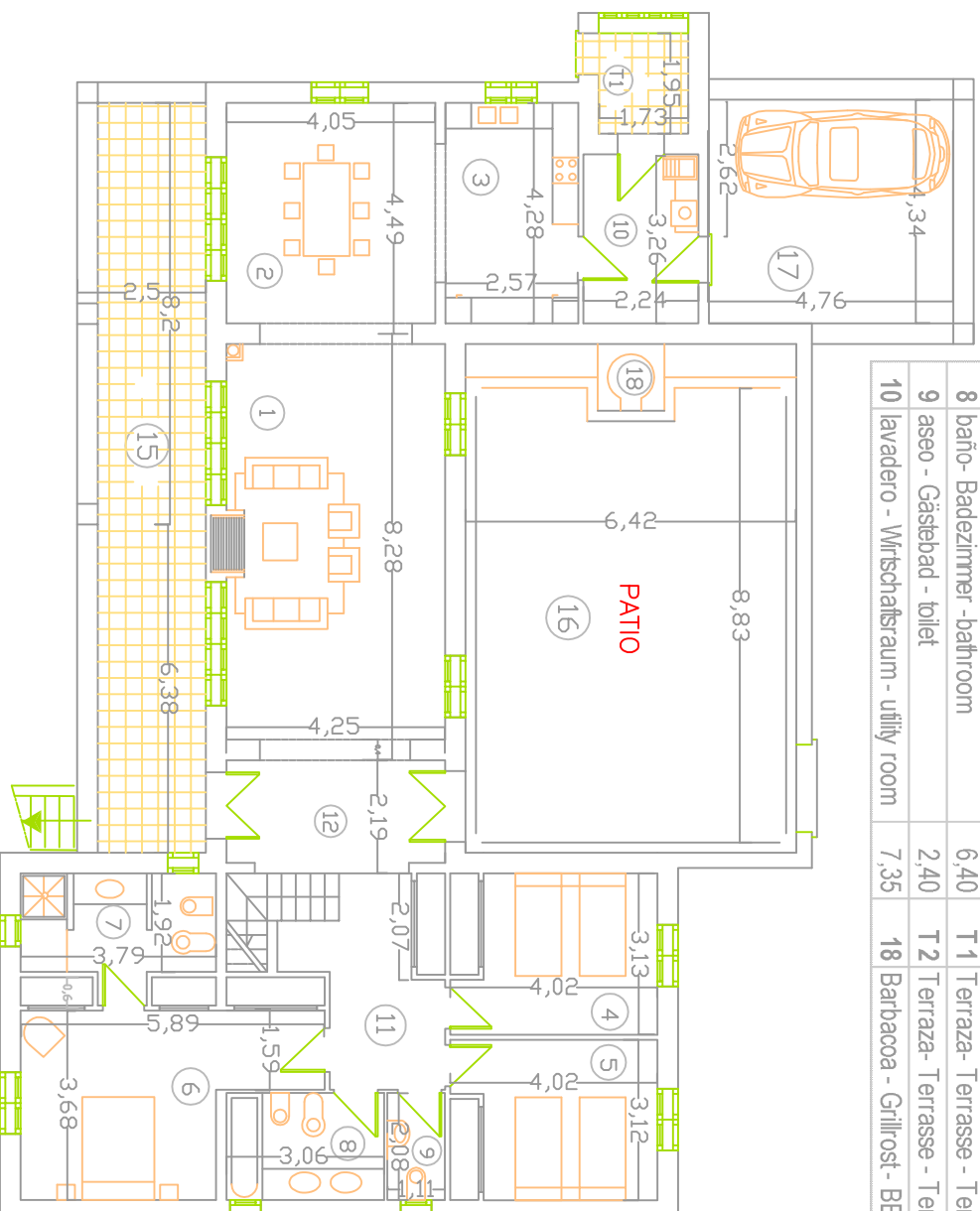


<b>Superficies útiles - Wohnfläche - Useful surface area</b>			
1 sala - Wohnzimmer - lounge	32,70	11 distribuidor - Flur - corridor	8,82
2 comedor - Esszimmer - dining room	17,42	12 vestíbulo - Eingang - entrance hall	8,50
3 cocina - Küche - kitchen	11,06	13 estudio - Studio - studio	18,46
4 dormitorio - Schlafzimmer - bedroom 1	12,65	14 baño - Badezimmer - bathroom	5,40
5 dormitorio - Schlafzimmer - bedroom 2	12,57	15 Porche	30,62
6 dormitorio - Schlafzimmer - bedroom 3	20,45	16 Páño	61,36
7 baño - Badezimmer - bathroom	7,90	17 garaje - Parkplatz - Garage	20,50
8 baño - Badezimmer - bathroom	6,40	T1 Terraza - Terrasse - Terrace	3,40
9 aseo - Gästebad - toilet	2,40	T2 Terraza - Terrasse - Terrace	25,08
10 lavadero - Wirtschaftsraum - utility room	7,35	18 Barbecue - Grillrost - BBQ	



<b>Superficies construidas</b>	
<b>Verbaute Fläche</b>	
<b>Constructed surface area</b>	
Planta baja - Erdgeschoss - groundfloor	194,26
Estudio - Studio - Studio	36,92
<b>Total interior</b>	<b>231,18</b>
Porches	30,62
Terrazas- Terrassen - Terraces	89,00
<b>Total exterior</b>	<b>119,62</b>
Piscina - Pool	40

FINCA "XICLATI" - A "



**COTESA**

BB GrupBAUZA