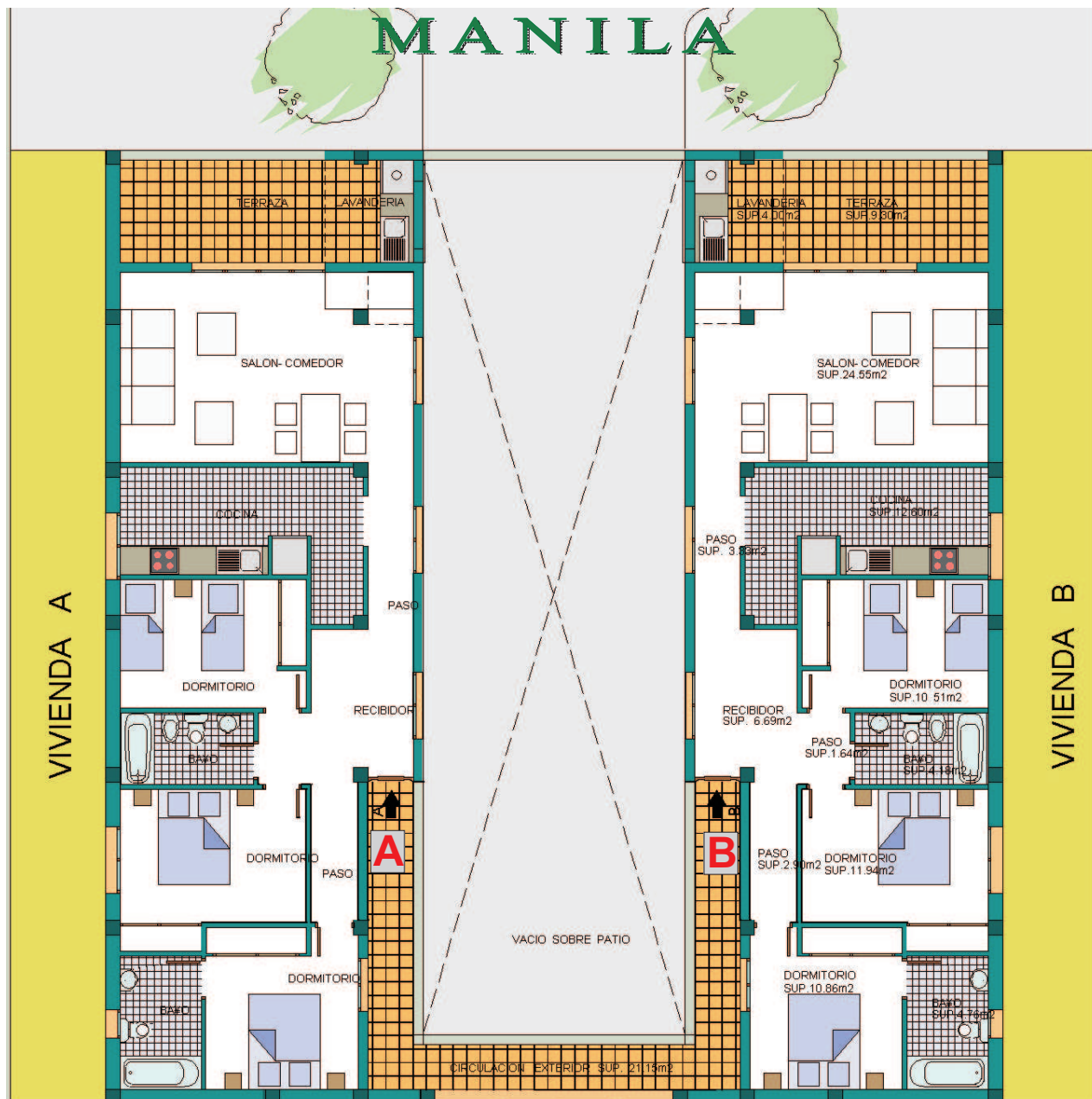


APARTAMENTOS MANILA



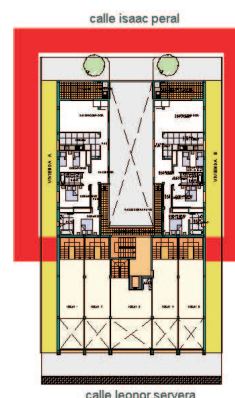
VIVIENDAS / APARTMENTS / WOHNUNGEN **A / B**

Sup. construida/ *Constructed surface area/*
Verbaute Fläche

125,35m²

Sup. útil / Useful area / Wohnfl.

Salón / Lounge / Wohnzimmer	24,55m ²
Cocina / Kitchen / Küche	12,60m ²
Dormitorio1 / Bedroom1 / Schlafzimmer1	10,51m ²
Dormitorio2 / Bedroom2 / Schlafzimmer2	11,94m ²
Dormitorio3 / Bedroom3 / Schlafzimmer3	10,86m ²
Baño1 / Bathroom1 / Badezimmer1	4,18m ²
Baño2 / Bathroom2 / Badezimmer2	4,76m ²
Recibidor / Hall / Flur-Eingang	6,69m ²
Lavadero / Utility room / Wirtschaftsraum	4,00m ²
Balcón / Balcony / Balkon	9,30m ²
Pasillo / Corridor / Flur	7,87m ²



COTESA

GrupBAUZA